



SINCE 1999



# Leading US-based Healthcare Provider Leverages Netsmartz to Develop Facial Analysis Software for PTSD and TBI Detection

Discover how Netsmartz helped the client build an advanced and accurate facial analysis platform to detect early signs of post-traumatic stress disorder and traumatic brain injury among their patients.

A white circle containing the text "70%".

70%



## About the Client

The client is a leading US-based healthcare provider that deals with patients suffering from medical conditions such as post-traumatic stress disorder and traumatic brain injury. They aim to improve patient care and diagnosis through modern medical technology.

## The Need

The client approached us with a concept for software that uses facial analysis to detect signs of PTSD and TBI. They were looking to develop fully functional software for medical purposes. Here's what our experts helped the client with:

**Develop a facial analysis platform to determine the early signs of PTSD and TBI**

**Ensure the software can analyze photos submitted via web or mobile apps**

**Integrate advanced features like detecting the severity level of the condition**

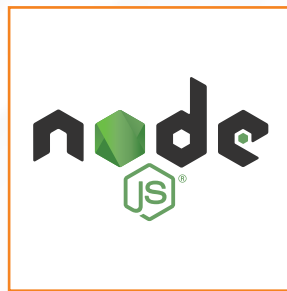
**Develop reliable and user-friendly software that integrates seamlessly with healthcare workflows**



## Our Solution

Team Netsmartz held an in-depth meeting with the client to gain a clear understanding of their expectations. Once we grasped their needs, we started by determining the tech stack required for this project, followed by the software development process.

## Teck Stack



### Dedicated Team

We built a dedicated development team consisting of a project manager, business analyst, technical lead, two senior AIML engineers, a senior backend engineer, two senior frontend engineers, a quality analyst, and a designer to work alongside the client.

### Model Development

Our experts leveraged their knowledge of machine learning and deep learning algorithms to develop and train models to scan facial features and detect PTSD and TBI signs among patients. We iteratively tested the model to ensure 100% accuracy and reliability.

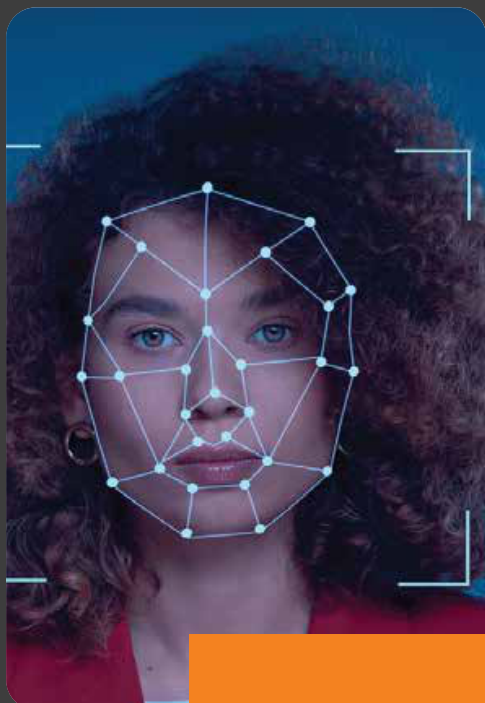
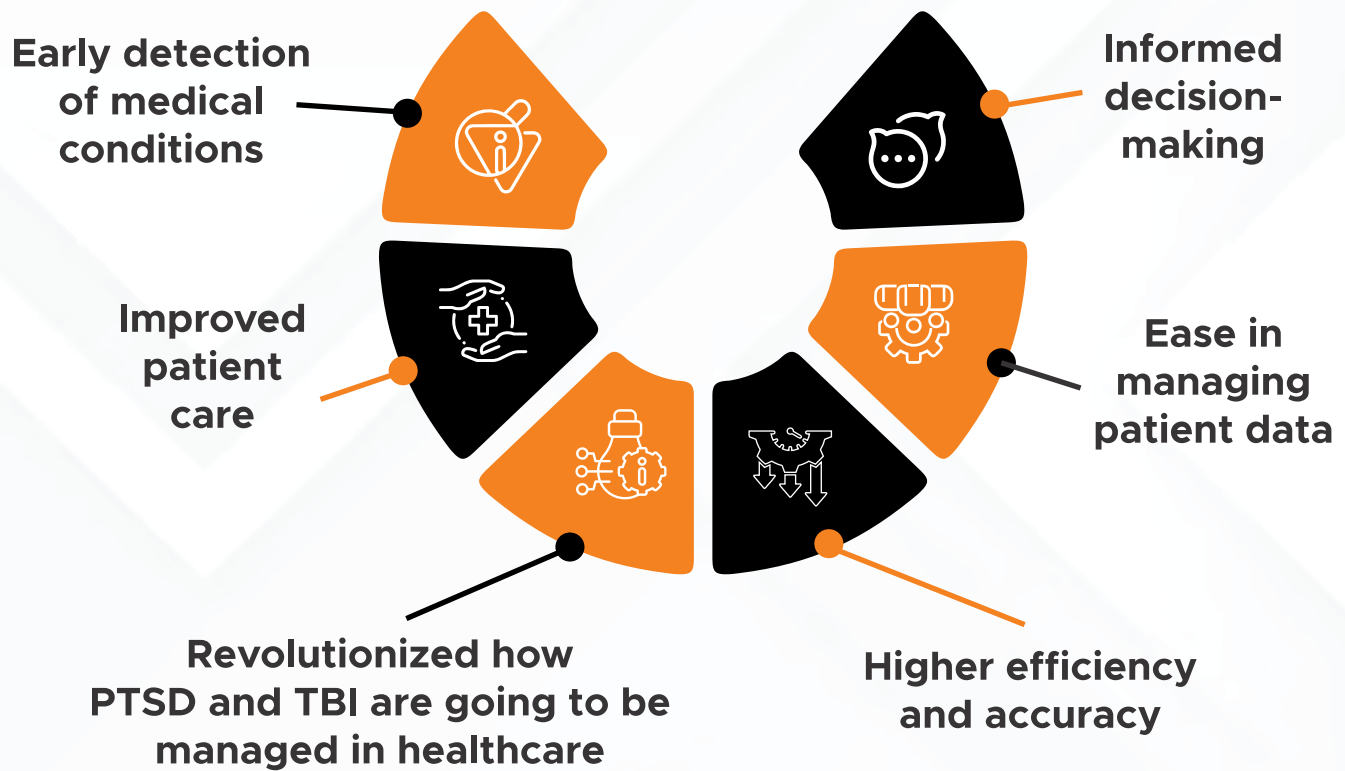
### Web Application Development

We designed and developed a user-friendly application for the client that helped them analyze facial features by uploading patients' photos. The app uses trained models to provide an accurate assessment of whether a patient has PTSD or TBI or not.

### Centralized Dashboard

The Netsmartz team also integrated a centralized dashboard for the client that helped them manage records and track patient assessments easily. The dashboard allowed the client to enhance operational efficiency and ensure hassle-free data management.

# How the **Facial Analysis Software** Helped the Client Transform Patient Care



## Why Netsmartz

- 25+ years of experience in empowering SaaS businesses
- 40+ tools and advanced tech stack across 100+ skill sets
- 24x7 dedicated support by AI-certified engineers
- Cloud-first approach for easy adaptability and scalability
- Home-grown SaaS success stories across the globe

# About Netsmartz

Netsmartz is a leading growth and digital transformation partner for global enterprises and SaaS businesses. The USA-based software company was established in 1999 and continues to empower organizations with a dedicated team of over 1000 professionals, strategically located across 10 global offices, serving a diverse portfolio of over 2000 customers. From augmenting teams with dedicated expert resources to integrating AI seamlessly across operations and ensuring robust cybersecurity, businesses rely on Netsmartz as their ultimate partner for accelerating growth, increasing ROI, and achieving unparalleled scalability.

**25**  
Years  
in Excellence

**1000+**  
Team  
Members

**2000+**  
Projects  
Completed

**10+**  
Global  
Locations



**NORTH AMERICA**  
Rochester, NY, Vancouver,  
Mississauga

**EUROPE**  
Oslo

**ASIA**  
Singapore, Dubai, Chandigarh,  
Mohali, Noida, Gurugram,  
Pune

**AUSTRALIA**  
Melbourne  
Sydney

Let's connect!



[www.netsmartz.com](http://www.netsmartz.com)



[sales@netsmartz.com](mailto:sales@netsmartz.com)



1-888-661-8967